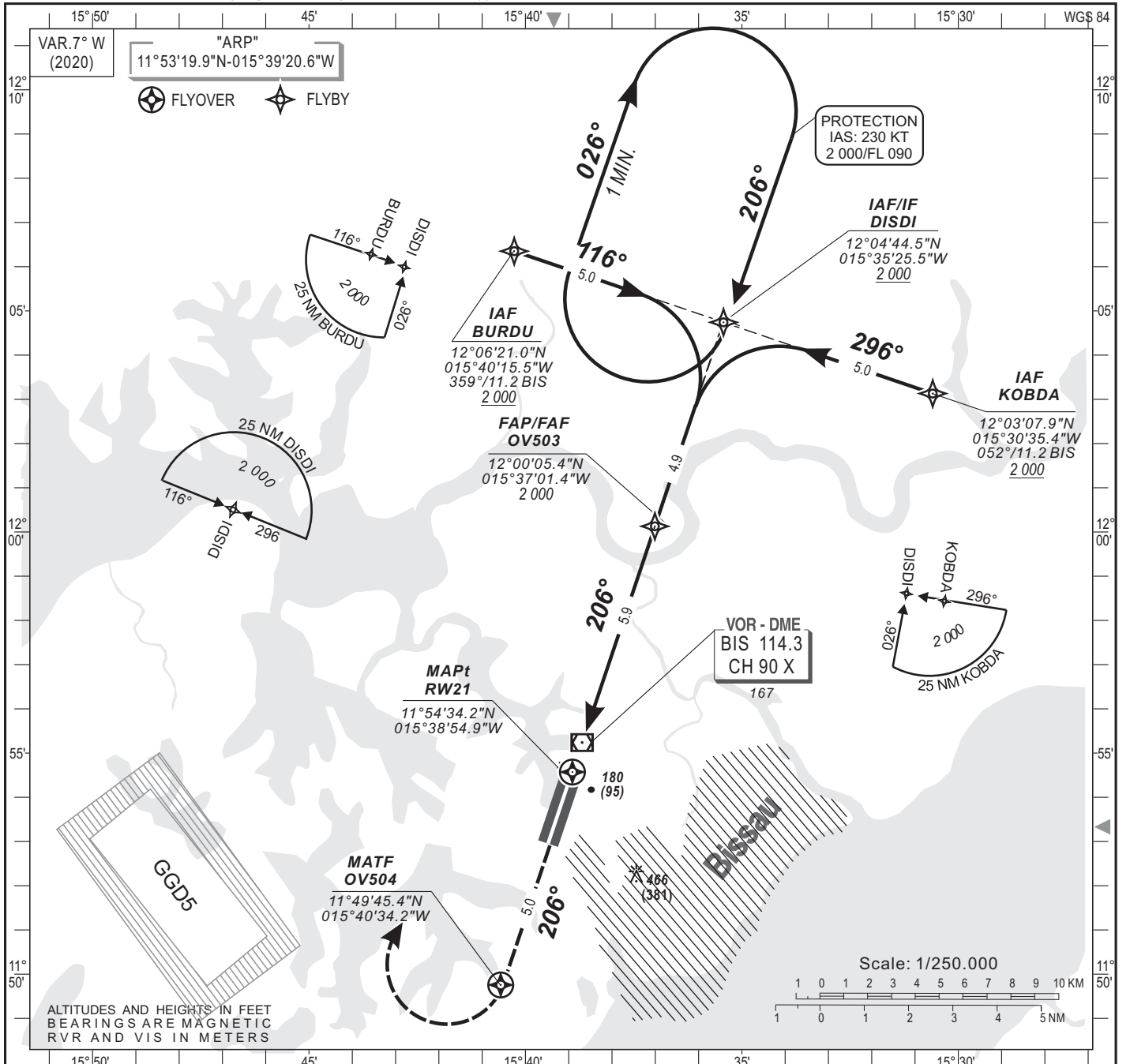
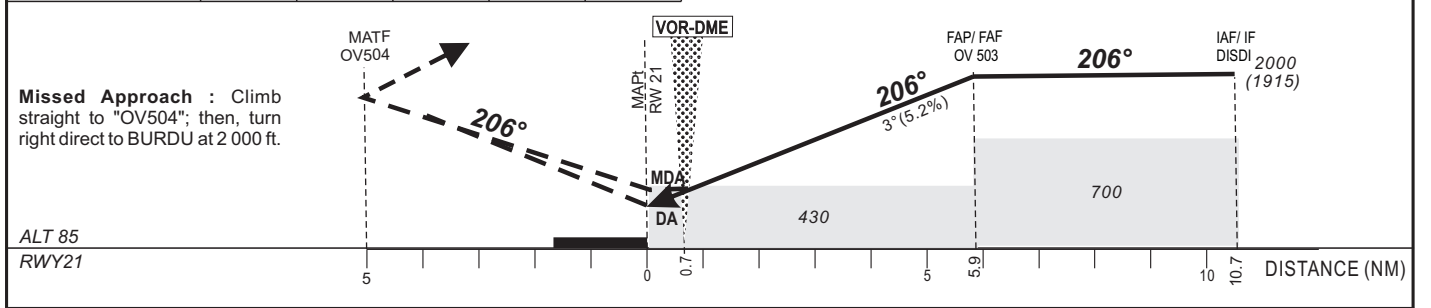


HEIGHTS RELATED TO THR RWY 21- ELEV 85 FT



Distance to RWY 03 (NM)	FAP/FAF	5	4	3	2	TRANSITION ALTITUDE : 3 000
Altitude (ft)	2 000	1730	1410	1090	770	



CAT	LNAV/VNAV					LNAV					CIRCLING (3)					RVR for take-off	
	DA (DH)	MDA MDH	RVR(1)	RVR(2)	OCA (OCH)	MDA MDH	RVR(1)	RVR(2)	OCA (OCH)	MDA MDH	VIS	KT	MIN	SEC	KT	MIN	SEC
A	331 (246)	340 (250)	1000	1500	426 (341)	430 (350)	1200	1500	579 (450)	580 (500)	1500	90	3	Min 56	140	2	Min 32
B	331 (246)	340 (250)	1100	1500	426 (341)	430 (350)	1300	1500	763 (634)	770 (680)	1600	110	3	Min 32	150	2	Min 22
C	331 (246)	340 (250)	1200	1600	426 (341)	430 (350)	1400	1800	862 (733)	860 (780)	2400	120	2	Min 57	170	2	Min 05
D	331 (246)	340 (250)	1400	1800	426 (341)	430 (350)	1600	2000	862 (733)	860 (780)	3600	130	2	Min 43	180	1	Min 58

Notes : - (1) With approach lights - (2) Without approach lights - (3) Daytime only. OCH and MDH AAL  
 - Climbing sector after take-off: between radials 084° and 318° BIS  
 - Minimum temperature : 10°C  
 - RDH: 15 m

AMDT10/22 : Update